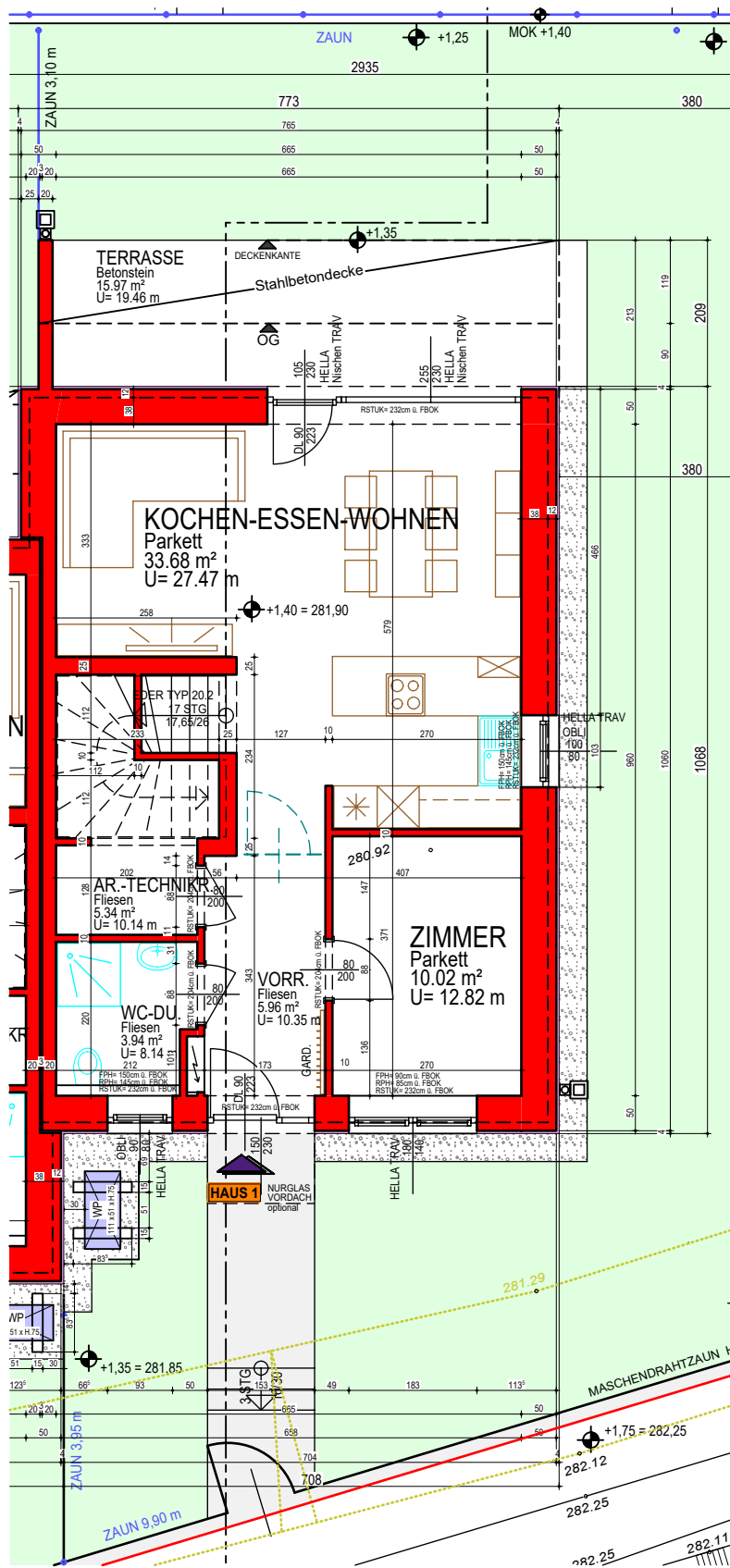
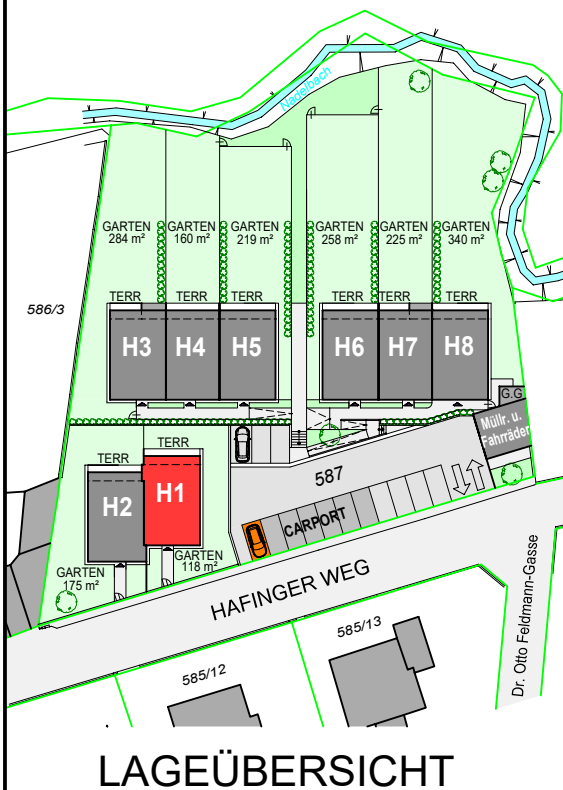
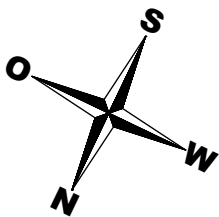
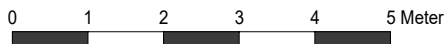


REIHENHAUSANLAGE NADELBACHPARK

IN 3100 ST.PÖLTEN, HAFINGERWEG



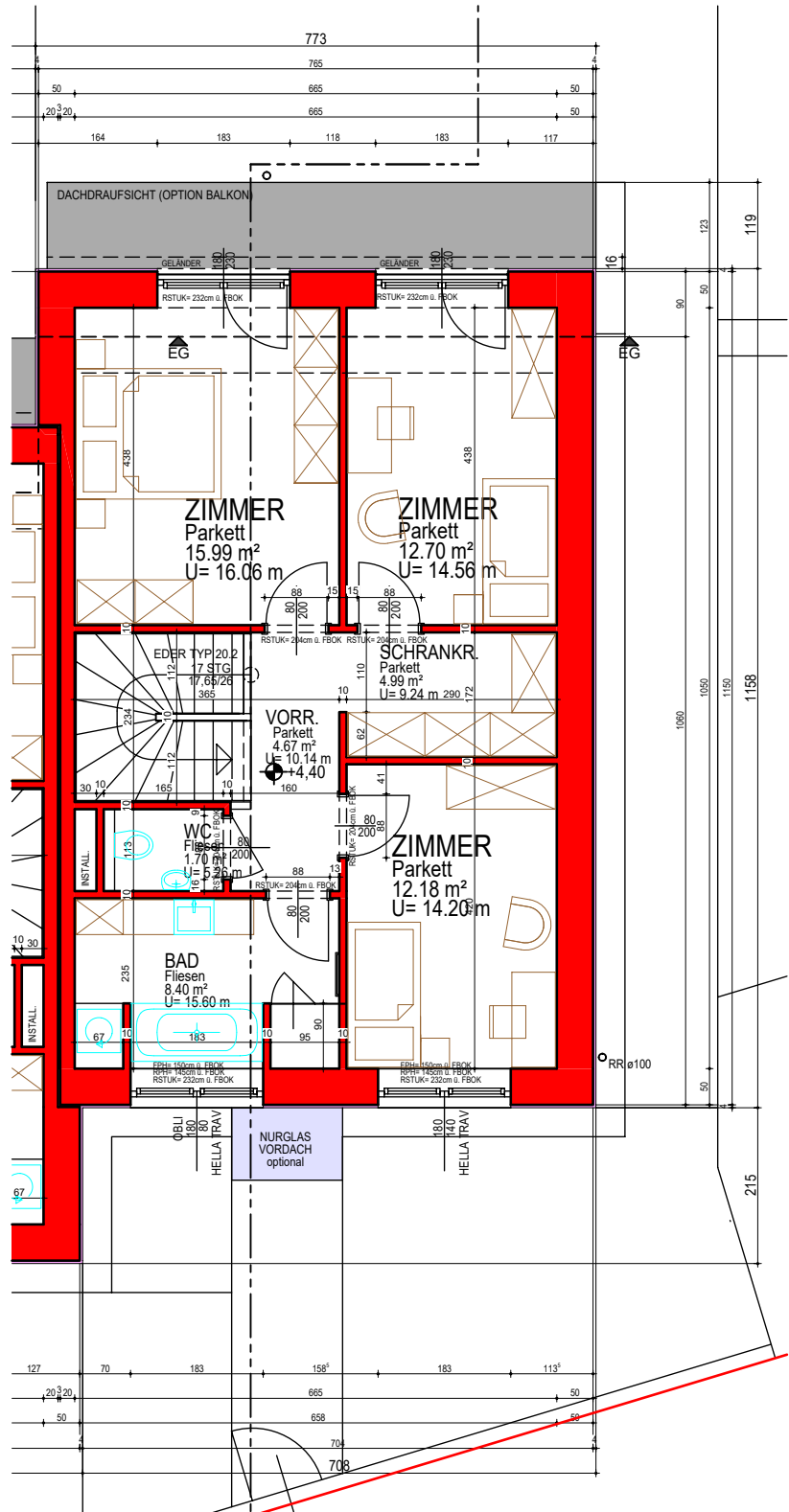
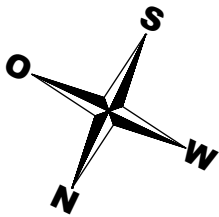
Nutzfläche EG+OG 119,57 m² Terrasse überdacht 15,97 m² Eigengarten 118 m² Parkplatz 1 Stk

HAUS 1 - ERDGESCHOSS M 1:100

Stand: 10.12.2021

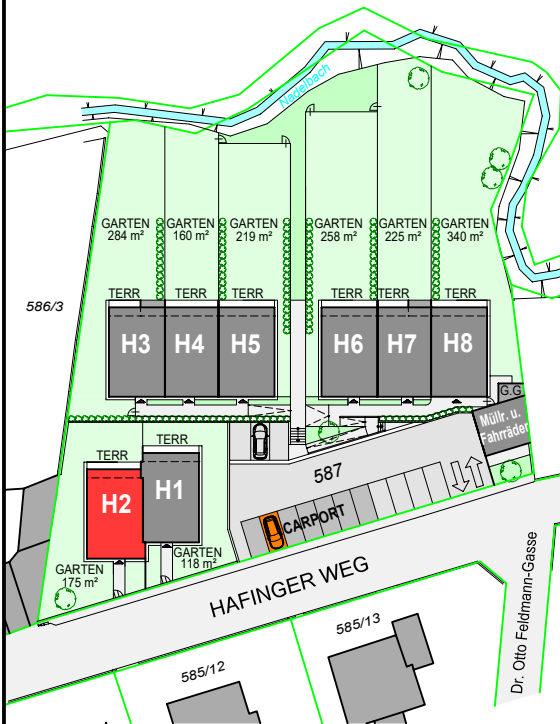
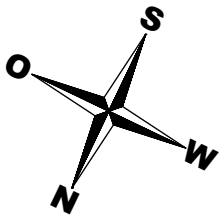
REIHENHAUSANLAGE NADELBACHPARK

IN 3100 ST.PÖLTEN, HAFINGERWEG

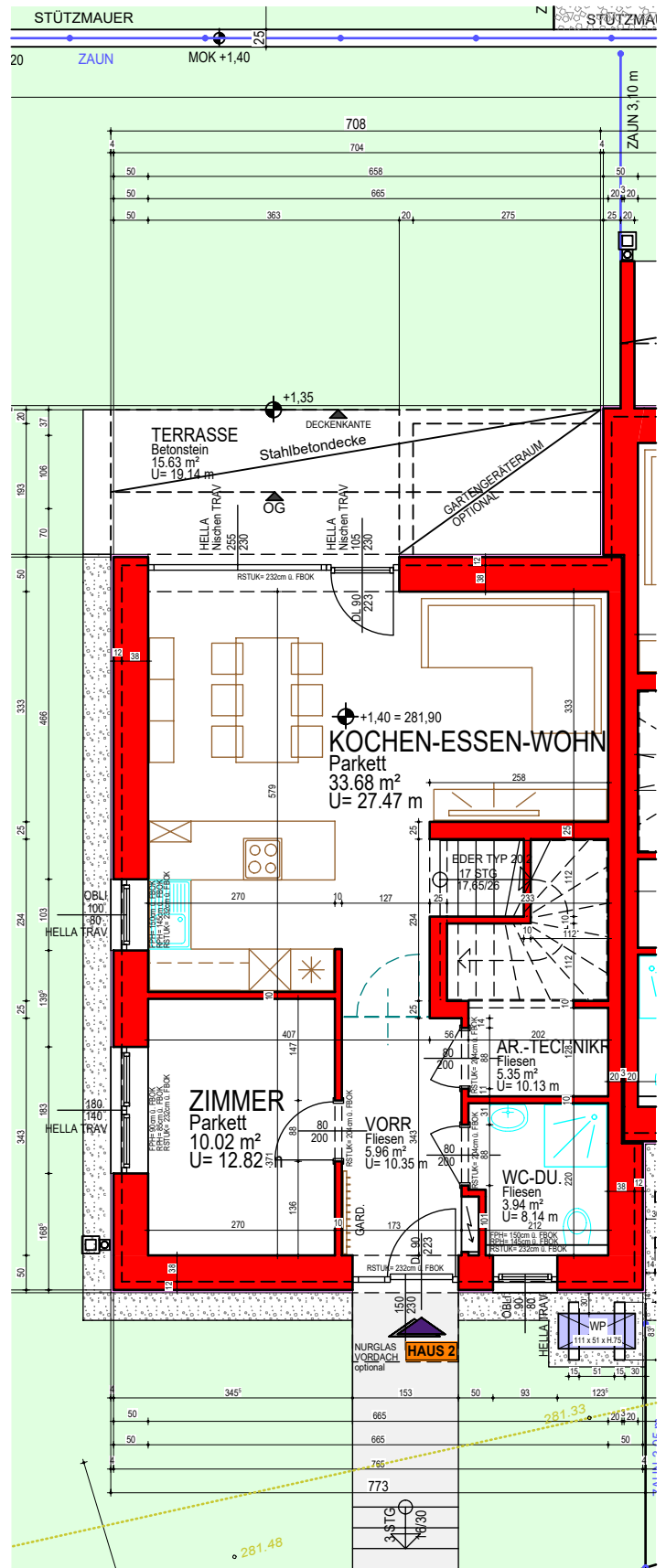


REIHENHAUSANLAGE NADELBACHPARK

IN 3100 ST.PÖLTEN, HAFINGERWEG



LAGEÜBERSICHT



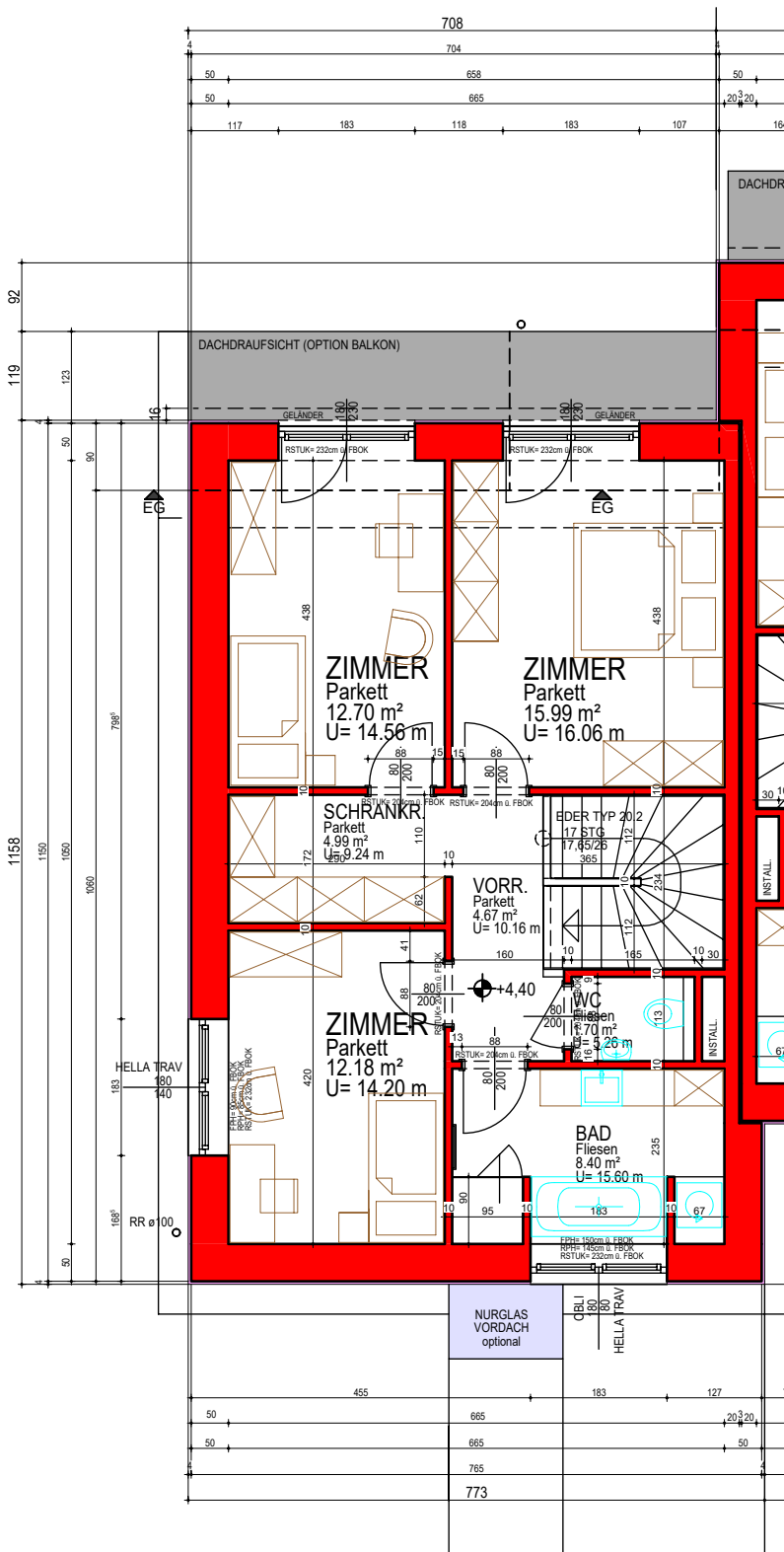
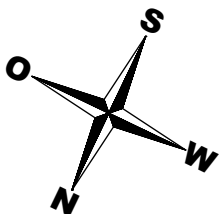
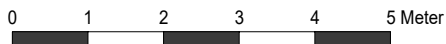
Nutzfläche EG+OG 119,57 m² | Terrasse überdacht 15,63 m² | Eigengarten 175 m² | Parkplatz 1 Stk

HAUS 2 - ERDGESCHOSS M 1:100

Stand: 10.12.2021

REIHENHAUSANLAGE NADELBACHPARK

IN 3100 ST.PÖLTEN, HAFINGERWEG

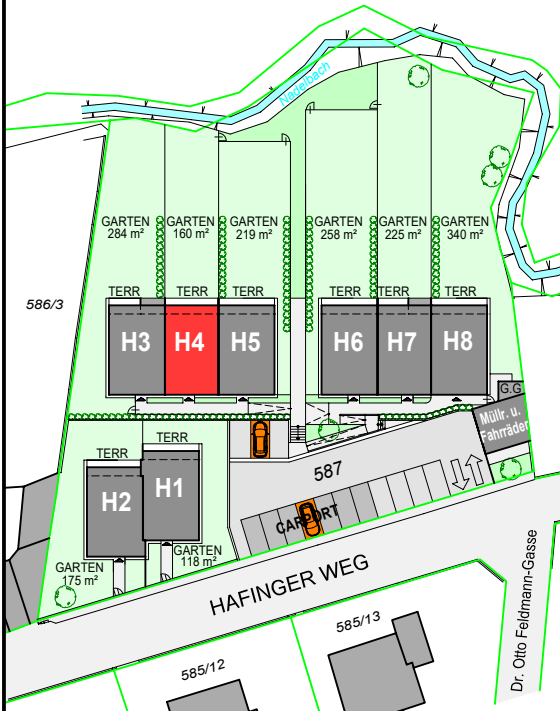
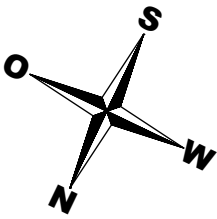


REIHENHAUSANLAGE NADELBACHPARK

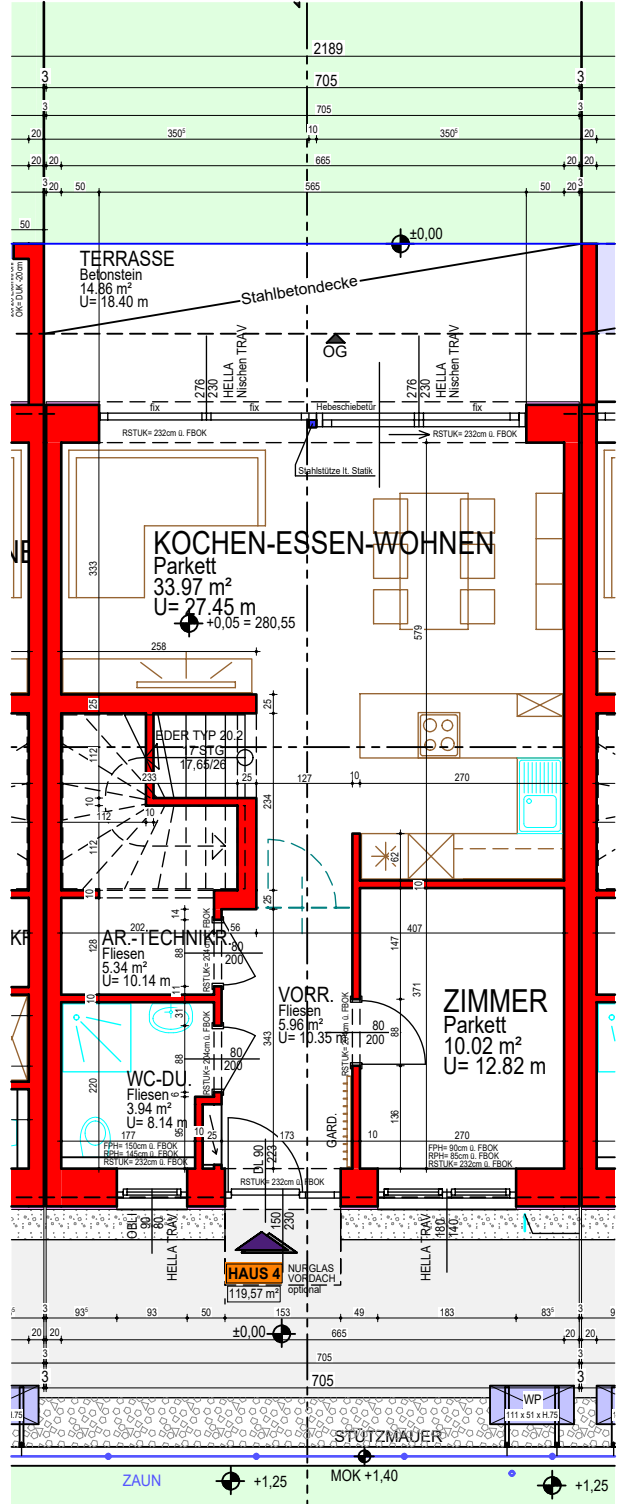
IN 3100 ST.PÖLTEN, HAFINGERWEG



0 1 2 3 4 5 Meter



LAGEÜBERSICHT



Nutzfläche EG+OG 119,86 m² Terrasse überdacht 14,86 m² Eigengarten 160 m² Parkplatz 2 Stk

HAUS 4 - ERDGESCHOSS M 1:100

Stand: 10.12.2021

REIHENHAUSANLAGE NADELBACHPARK

IN 3100 ST.PÖLTEN, HAFINGERWEG

